

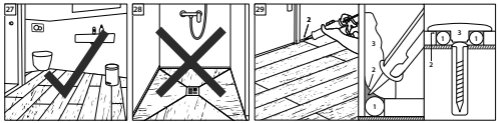
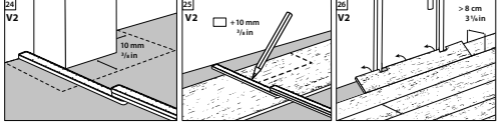
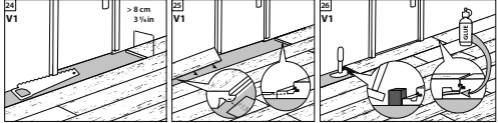
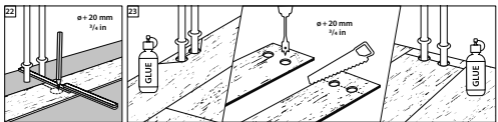
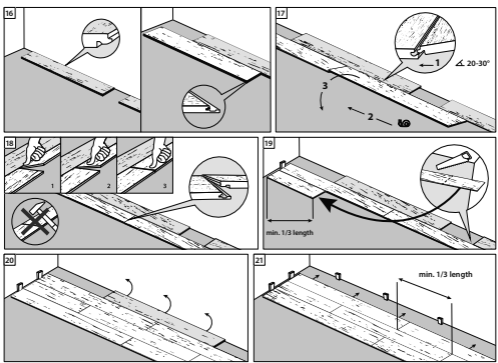
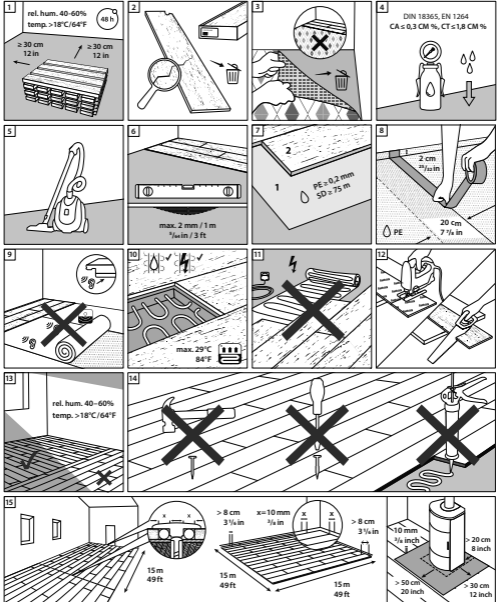
Verlegeanleitung Laminatboden

CLASSEN®

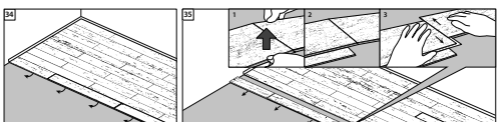
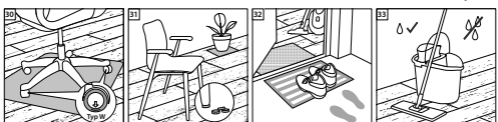
Verlegesystem Megaloc aqua protect im Dielenformat
mit integrierter Trittschalldämmung



Rev. 8.0 / 11.23



1: PE foam baker rod / PE Schaum Band, 2: Silicone / Silikon, 3: Molding / Leiste



QR-Code zu den

- Verlegeanleitungen in Textform
- Reinigungs- und Pflegehinweisen
- Technischen Datenblättern
- Produktzertifikaten